

E-learning course on Human Mobility in the Context of Climate Change

Kees van der Geest, Robert Oakes, Yannick Schillinger

Bonn, 25 October 2023

HMCCC Sharefair Event, GIZ



Outline

9:15-10:00

- 05 min The team
- 05 min UNU-EHS/EMIC (Kees) + PACET (Yannick)
- 10 min The course
- 05 min M1 animation (check audio!)
- 10 min How to navigate course (Yannick)
- 05 min Q&A
- 05 min Registration + bridge to next slot (Yannick)

10:00-10:30 Coffee Break

10:30-12:00:

- Self-paced learning (Module 1 *and* a module of choice)
- Work individually, Team UNU as resources persons
- Plenary discussion to share experiences

Team @UNU-EHS

Team EMIC

Human Mobility Experts



Dr Kees van
der Geest



Dr Lisa
Thalheimer



Dr Robert
Oakes



Claudia Fry

Team PACET

E-learning technology experts



Dr. Erick
Gankam
Tambo



Yannick Urs
Schillinger



Noor Hafiza
Nor Azmi

United Nations University

- Established in 1972; Official UN Organization
- 13 Institutes in 12 countries, HQ in Tokyo



Institutes

- Institute for Environment and Human Security (*UNU-EHS*)
- World Institute for Development Economics Research (*WIDER*)
- Maastricht Economic and Social Research and Training Institute on Innovation and Technology (*MERIT*)
- Centre for Policy Research (*CPR*)
- Institute on Comparative Regional Integration Studies (*CRIS*)
- Institute for Integrated Management of Material Fluxes and of Resources (*FLORES*)
- Institute for the Advanced Study of Sustainability (*IAS*)
- International Institute for Global Health (*IIGH*)
- Institute for Natural Resources in Africa (*INRA*)
- Institute for Water, Environment and Health (*INWEH*)
- UNU Macau (Digital technologies for Sustainable Development)
- Programme for Biotechnology in Latin America and the Caribbean (*BIOLAC*)
- Operating Unit on Policy-Driven Electronic Governance (*EGOV*)



UNU Focus

- ❖ Sustainability
 - ❖ Environment, Water, Natural Resources
 - ❖ Development, Economy, Technology
 - ❖ Policy



UNU-EHS (Bonn)

Since
2004

Total UNU Bonn Personnel

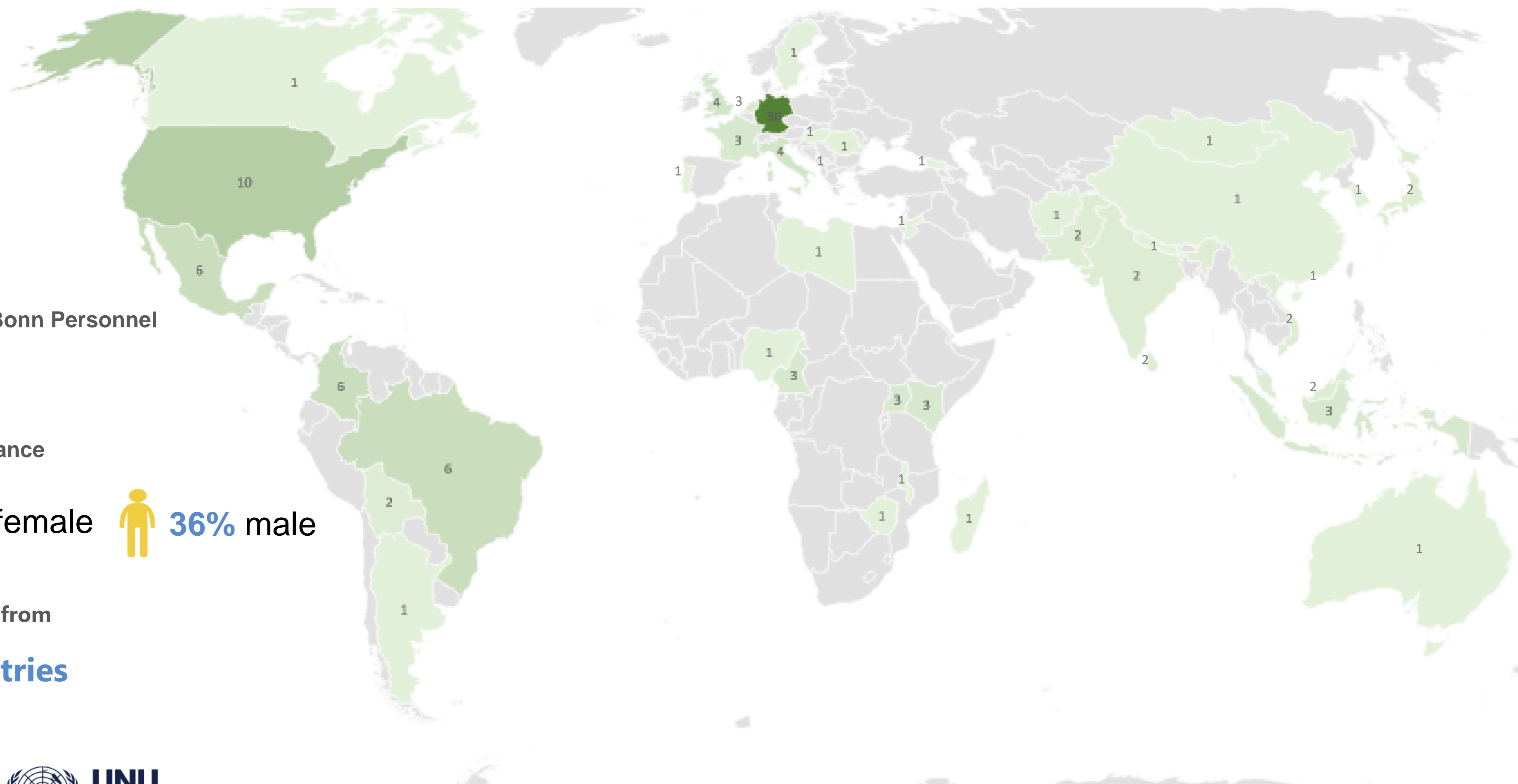
119

Gender Balance

 64% female  36% male

Originating from

41 countries



Research Groups at UNU-EHS

- Vulnerability Assessment, Risk Management & Adaptive Planning (VARMAP)
- Environmental Vulnerability & Ecosystem Services (EVES)
- **Environment and Migration: Interactions and Choices (EMIC)**
- **Pan African Cooperation and Educational Technologies (PACET)**
- The Munich Climate Insurance Initiative (MCII)
- Global Mountain Safeguard Research (GLOMOS)
- Urban Futures and Sustainability Transformation (FAST)
- Well-being, Sustainability and Equity (WiSE) Transformation

Key words: Risk, vulnerability,
adaptation, transformation
environment, climate change

EMIC: Environment and Migration: Interactions and Choices



Dr Kees van
der Geest

Dr Lisa
Thalheimer

Dr Robert
Oakes

Claudia Fry

Dr David
Durand-
Delacre

Ann-
Christine
Link

Akwasi
Owusu

Douwe van
Schie

HISTORY: Pioneer in environmental mobility research, since mid 2000s.

MAIN RESEARCH FOCUS: Links between climate/environmental change and human mobility +
Loss and damage from climate change

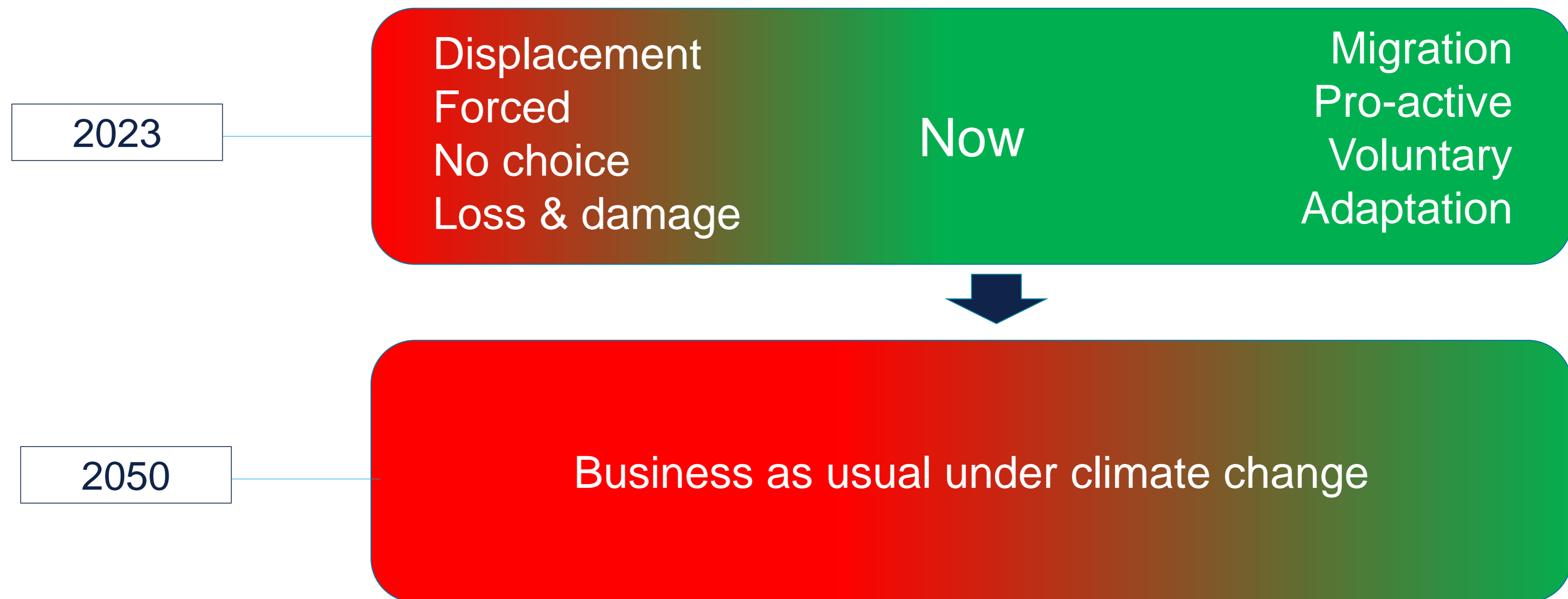
CORE QUESTIONS

- To what extent do migration and displacement occur as a result of climate impacts and environment change?
- Why do some people who live in hazardous areas not move (involuntary immobility/trapped populations)?

How can policy enhance the positive effects of climate mobility and reduce negative effects?

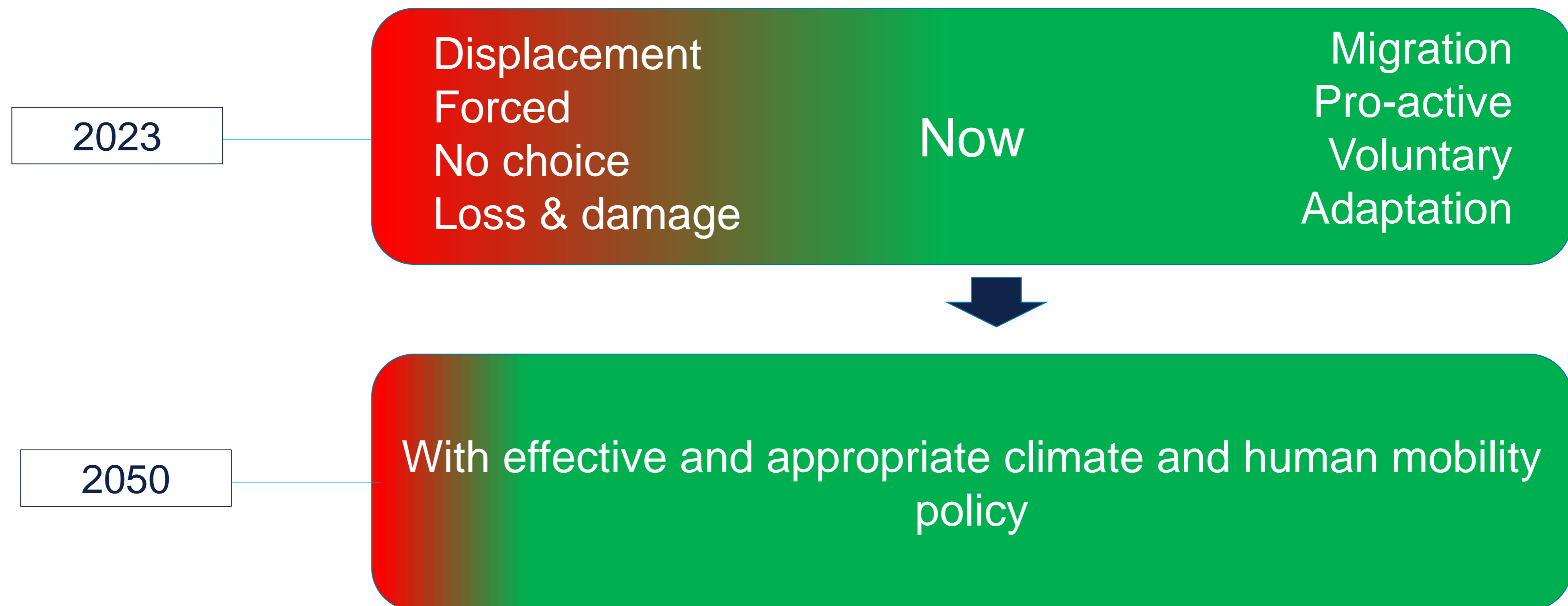
Policy objective

- Enable adaptive mobility (**Green**) → This makes people and societies more resilient to climate impacts;
- Avoid forced mobility (**Red**), which causes losses and damages.



Policy objective

- Enable adaptive mobility (**Green**) → This makes people and societies more resilient to climate impacts;
- Avoid forced mobility (**Red**), which causes losses and damages.



Selection of Current and Recent Projects

- A social simulation game to help policy makers think about planned relocation (*Robert Bosch Foundation*)
- Integrating Human Mobility in NAPs and NDCs (*FAO*)
- Climate Academy: Supporting community choices in a changing climate – learning from planned relocations (*MunichRe Foundation*)
- Climate Change and Migration in the **Marshall Islands** (*NOAA*)
- Climate and Migration in the **Philippines** (*GIZ*)
- Loss & Damage from Climate Change in **Vietnam** (*GIZ*)
- Protecting Migrants' Wellbeing in **India** during the COVID pandemic (*DFG*)

PACET: Pan African Cooperation and Educational Technologies



Dr. Erick
Gankam
Tambo



Dr. Ambe
Emmanuel
Cheo



Yannick Urs
Schillinger



Axel
Nguedia
Nguedoung



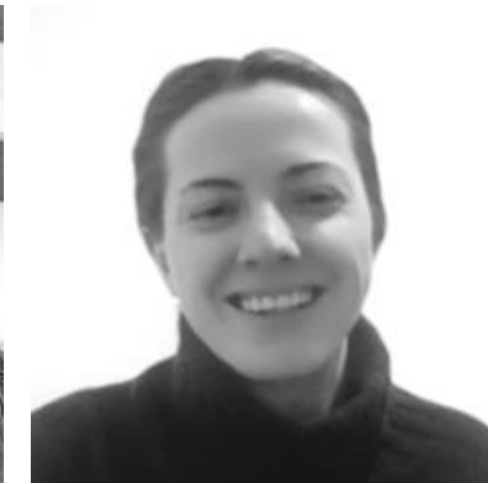
Federico
Alberto
Sanchez
Santillano



Noor Hafiza
Nor Azmi



Tarisai
Kanyepi



Flannery
Johnson



Tatiana
Grandon

INTERDISCIPLINARY TEAM: Computer Sciences, ICT4Dev, Technology Enhanced Learning / e-Learning, Energy Engineering, Water Engineering and Integrated Water Management, Environmental Sciences, Resources Management

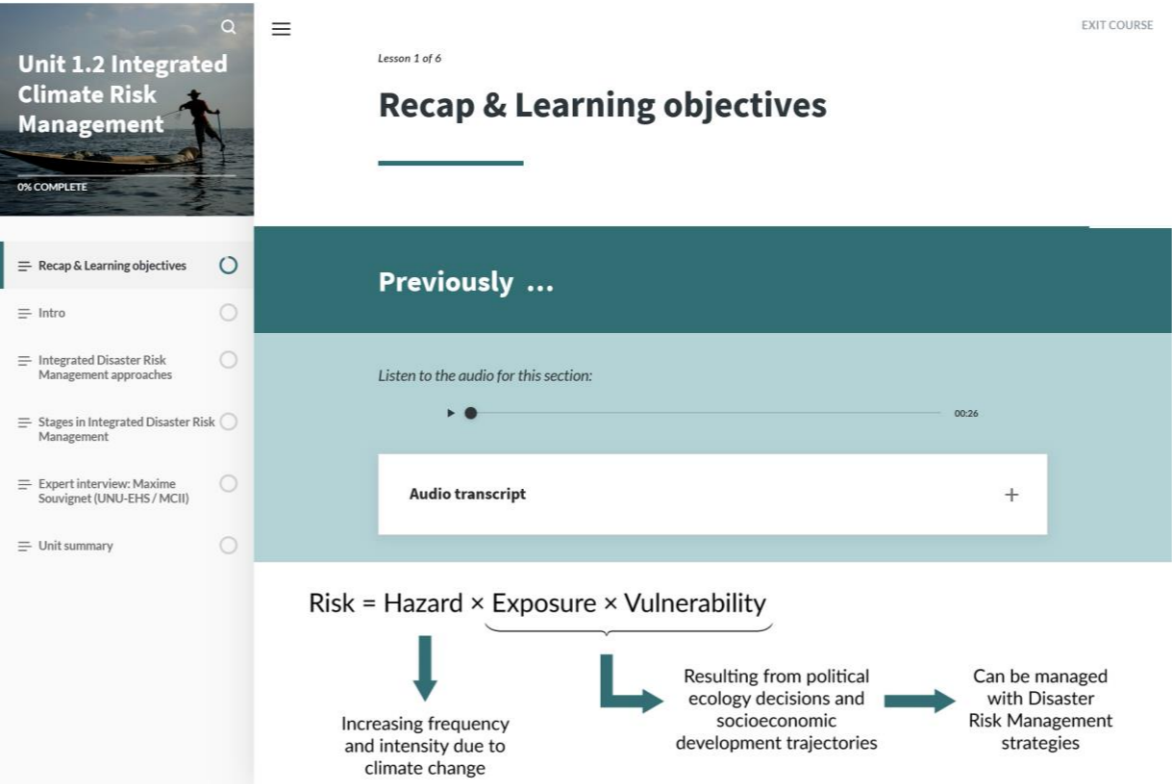
FOCUS: Intersection between research, capacity building, and strategic cooperation

RESEARCH / WORKING PRIORITY AREAS:

- Water, Energy & Food (WEF) Nexus
- South-South Bridge
- Cross-Cutting Themes:
 - Digitalisation
 - Green Innovation and Entrepreneurship
- Educational Technology

Educational Technologies

- Support the knowledge acquisition, skills development, and capacity building on issues related to risk and adaptation, sustainable development, and climate change
- Disseminate research results of UNU sections and programmes, support the teaching process within our joint master programme, partners and to a wide audience of stakeholders
- Contribute to reaching a broader audience in terms of capacity building on the topics covered at the institute



Self-paced online courses

Course Structure

1. Resilience and Energy Supply Infrastructure
2. Climate Change
3. Climate Resilient Energy Infrastructure
4. Case Study: Niger
5. Case Study: Mali



Video lectures and webinars



Entrepreneurial education



Online learning events

Selection of Current and Recent Projects

CDRFI MAPs

Title: Online course on Climate and Disaster Risk Finance and Insurance for civil society

Duration: Mar 2022 – Sep 2022

Budget: € 40,000

Partners: MCII



How can education technologies contribute to **reaching a broad audience** for capacity building based on topics covered at the institute considering the global mandate and limited resources at the institute?

Greenovations

Title: Empowering African Youth and Women Green Social Entrepreneurs

Duration: May 2022 – April 2024

Budget: € 165,360

Countries: Africa

Partners: AfriLabs, VC4A, Pan African University (PAUWES), Regional Collaboration Centre Kampala (RCC Kampala)



How can we **strengthen the ecosystem of innovation and entrepreneurship** in Africa with appropriated measures and structures to support the identification, ideation, and development of youth and women led business solutions in the green sector?

Impulsouth

Title: Global Cooperation for Climate Action: Southern engagement with Climate Negotiations and Commitments 2020-2023

Duration: March 2021 – May 2024

Budget: approx. € 100,000

Countries: Dominican Republic, Guatemala, Niger, Madagascar, Uganda, Zambia

Partners: Fundación Avina, UNFCCC, FLACSO Ecuador



How can we **enhance climate action** and **strengthen the engagement** of developing countries with the Paris Agreement "*ambition cycle*" in a way that is reflected at the 2023 Global Stocktake?

Short intro to the course

Dr. Robert Oakes



General information about the course

Two years of development

Self-paced learning

9 modules of 45 minutes + Welcome and closing module

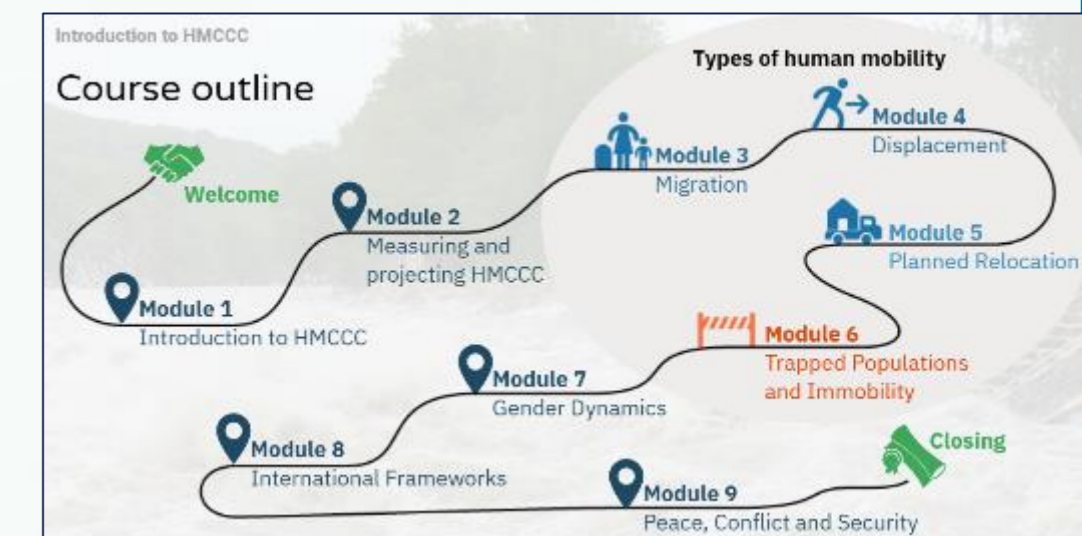
Total: approximately 8 hours

Possible to take/assign single modules

Certification

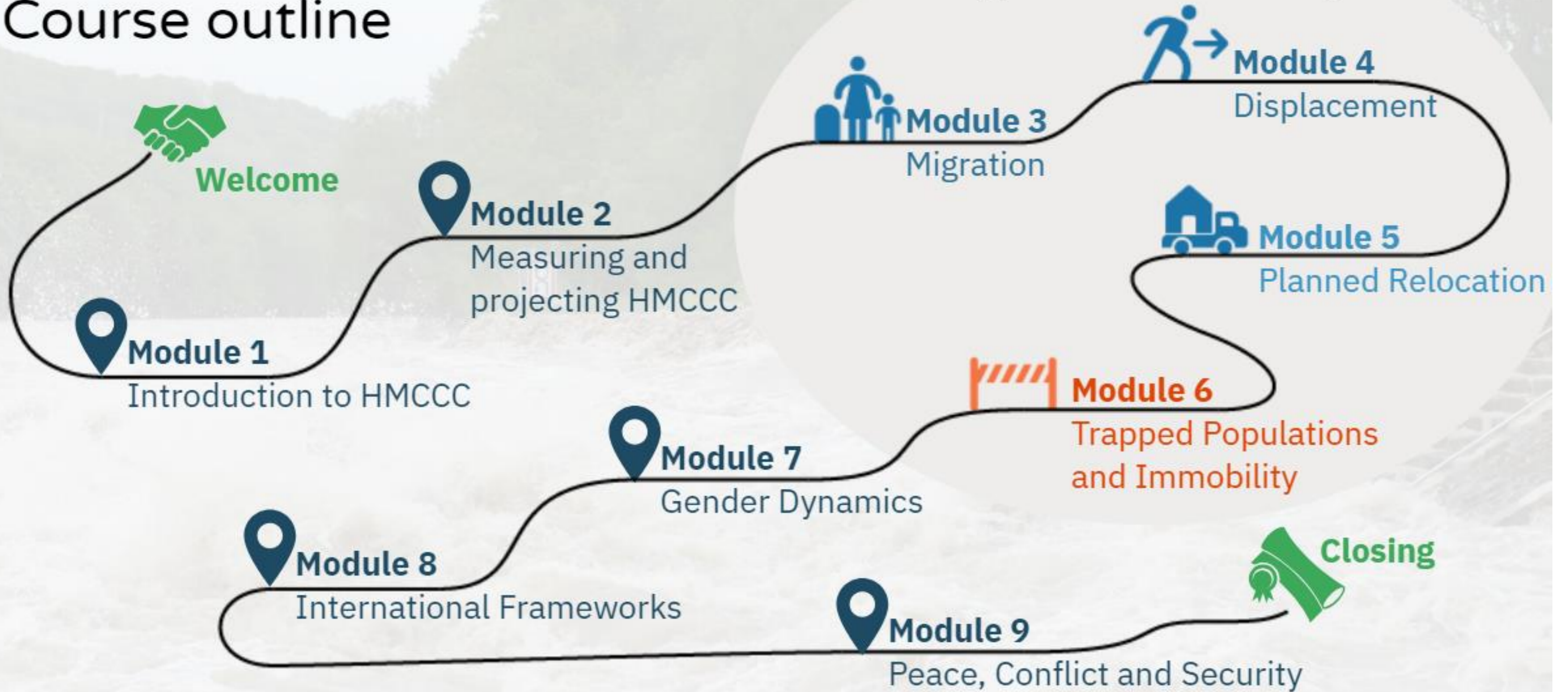
Online, open access → **October 2023**

Platform: Atingi [online.atingi.org]



**Click thumbnail to
enlarge**

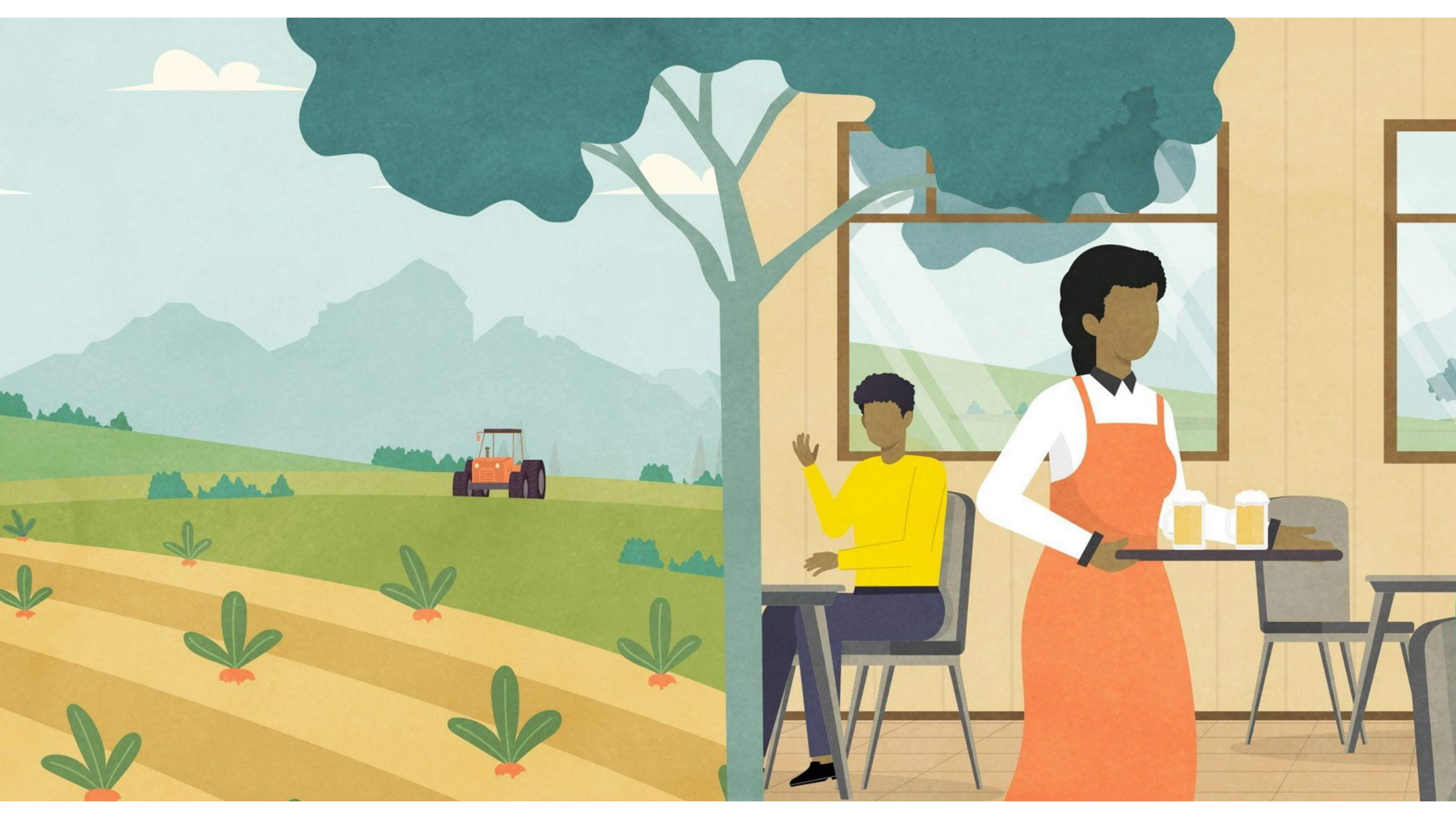
Course outline



Common structure and elements across modules

- Structure
 - Starts with an animated videos (people-centred)
 - Clear learning goals
 - Policy relevance
 - Ends with summary video with take-aways by UNU-Expert
- Content
 - Exercises
 - External videos
 - Case studies
 - Diagrams
 - Links to further study and resources

Animated videos



Expert videos

Expert videos



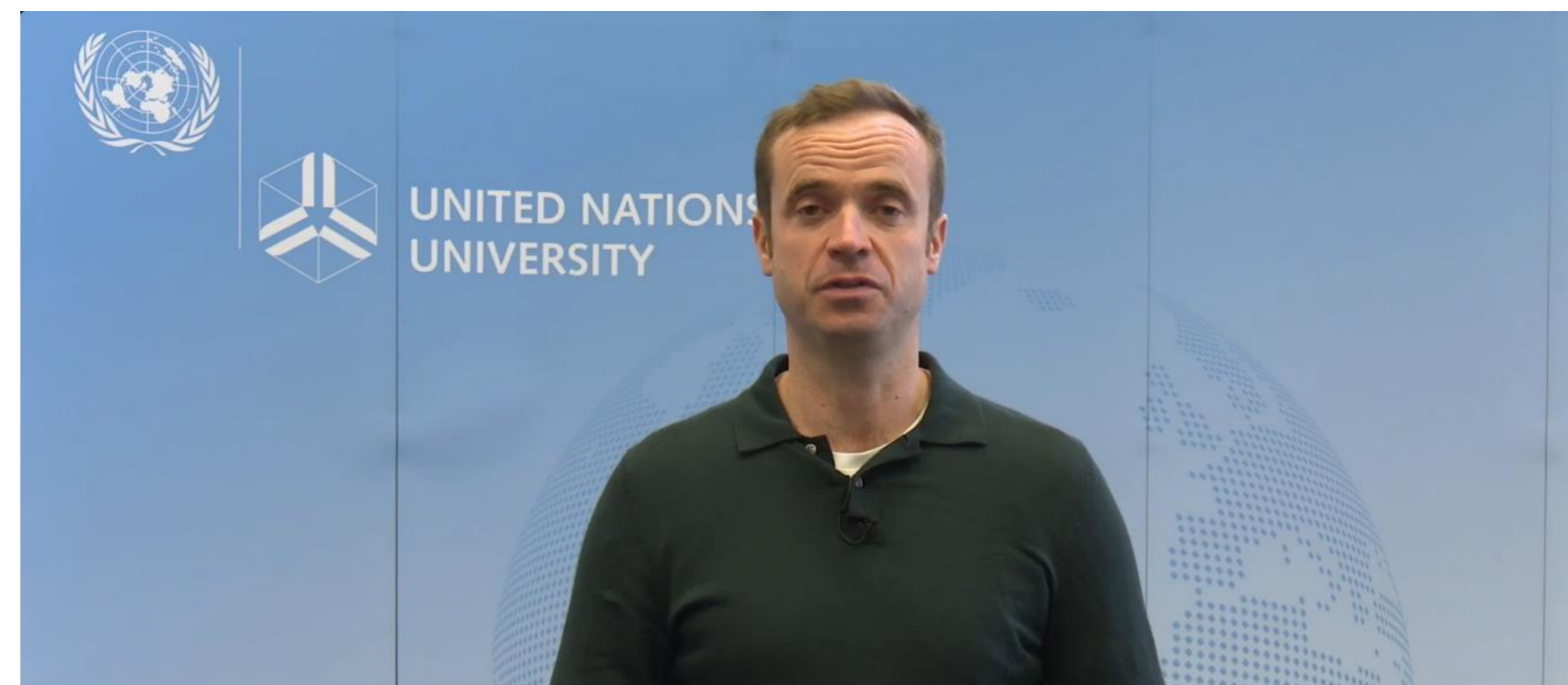
Kees van der Geest

Senior Researcher and Head of Section, UNU-EHS



Claudia Fry

Research Associate, UNU-EHS



Robert Oakes

Senior Researcher, UNU-EHS



Lisa Thalheimer

Senior Researcher, UNU-EHS

Exercises

Drag & Drop

Types of climatic impacts



Do you know the difference between slow-onset processes and sudden-onset events?
Drag the disasters below into the two categories.



floods



biodiversity loss



sea level rise



desertification



wildfires

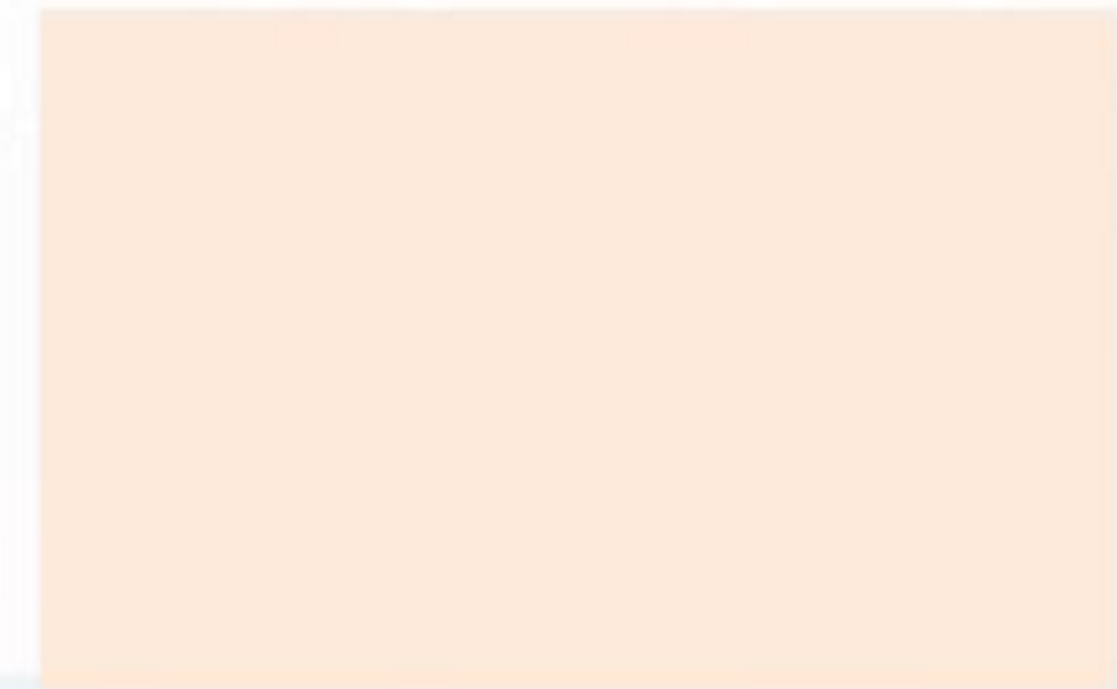


cyclones

Slow-onset



Sudden-onset



Exercises

Add missing words

How vulnerability relates to trapped populations



Complete the sentence below with the provided words.

environmental

slow-onset

aggravated

sudden-onset

unable

need

vulnerable

trapped

When people live in places that experience increasing stress from events and processes, they will feel an increased to migrate. However, if they are to migrate, they become and their vulnerability will be .



Exercises

Open Questions

Case study: Planned relocation in coastal Louisiana (USA)

Video: Watch this video from CBS Mornings and reflect on the questions:



Think of some reasons why many of the islanders resist relocation.

Sea level rise and cyclones endanger the island, but what other threats and causes of vulnerability are mentioned in the video?

How may the fact that the inhabitants are Native Americans influence their resistance to relocation?



Click on the questions to show possible answers.



Diagrams

Relocation process

Often, one whole community is moved together to one destination – but sometimes they are also distributed to several different destinations. The destinations may also receive households from different source communities.



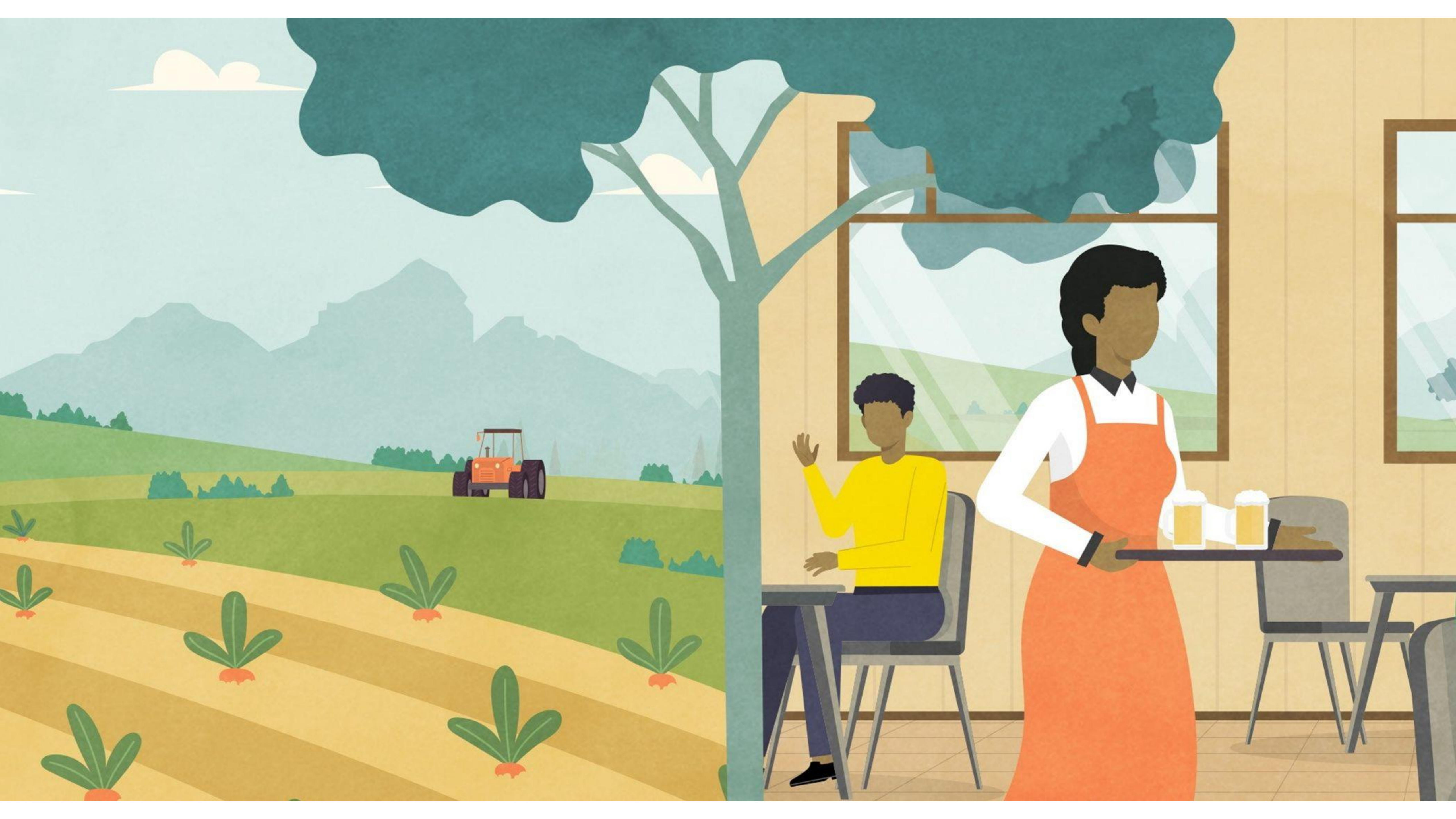
- Source community
- Destination community



This can make the stages of relocation a bit more complicated.

Can you think of ways in which the splitting and combining of communities might impact the relocation process?

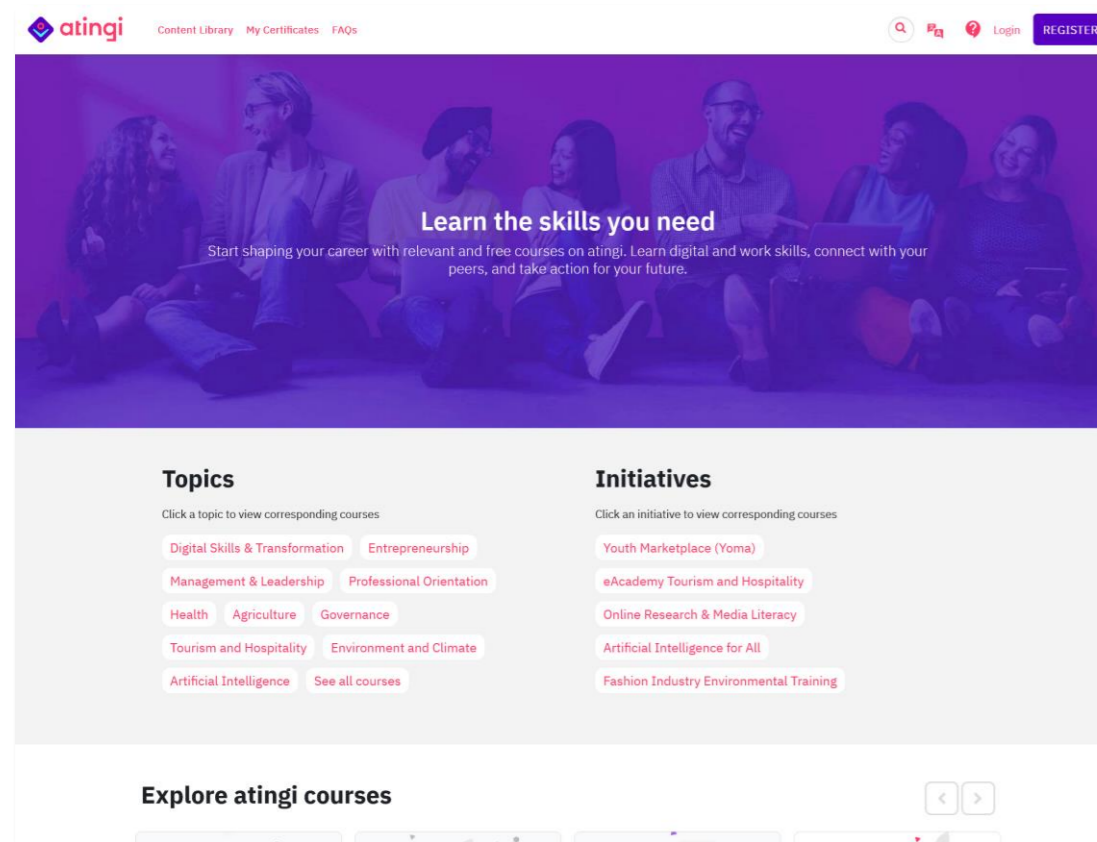




Yannick

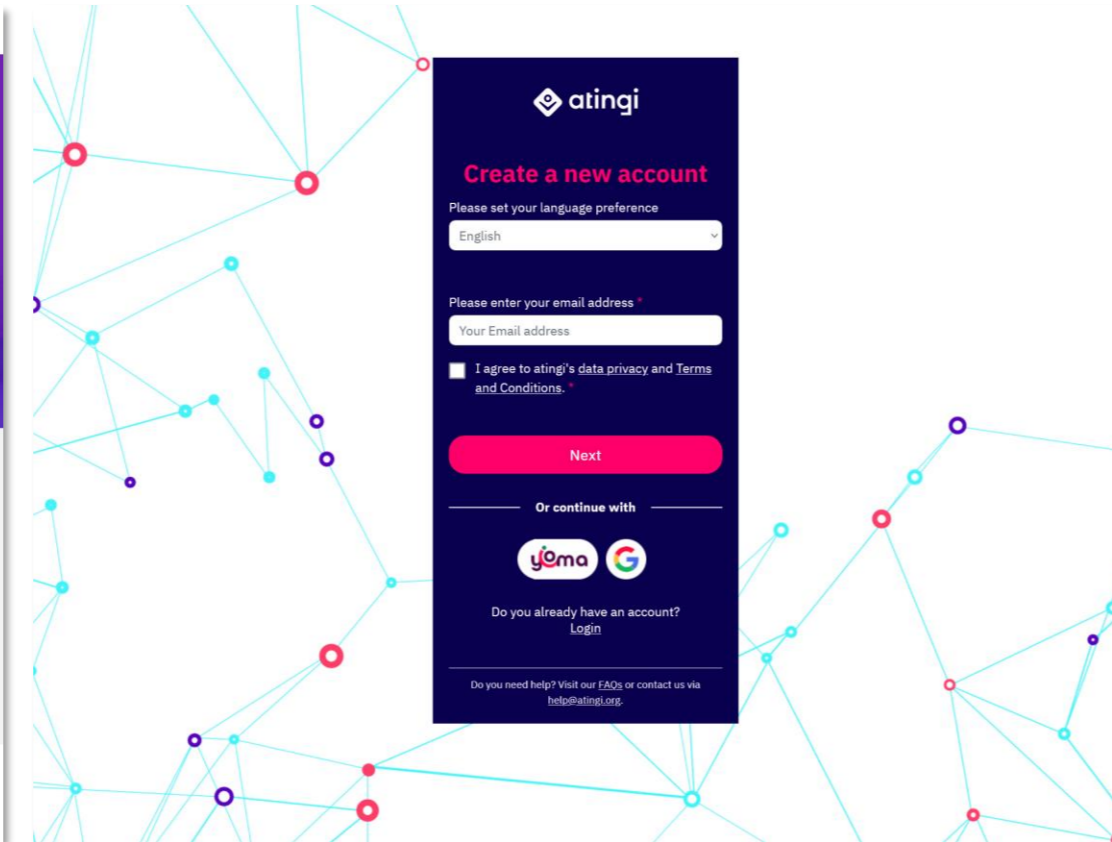
- 10 min How to navigate course (Yannick)
- 05 min Q&A
- 05 min Registration + bridge to next slot (Yannick)

Accessing the course

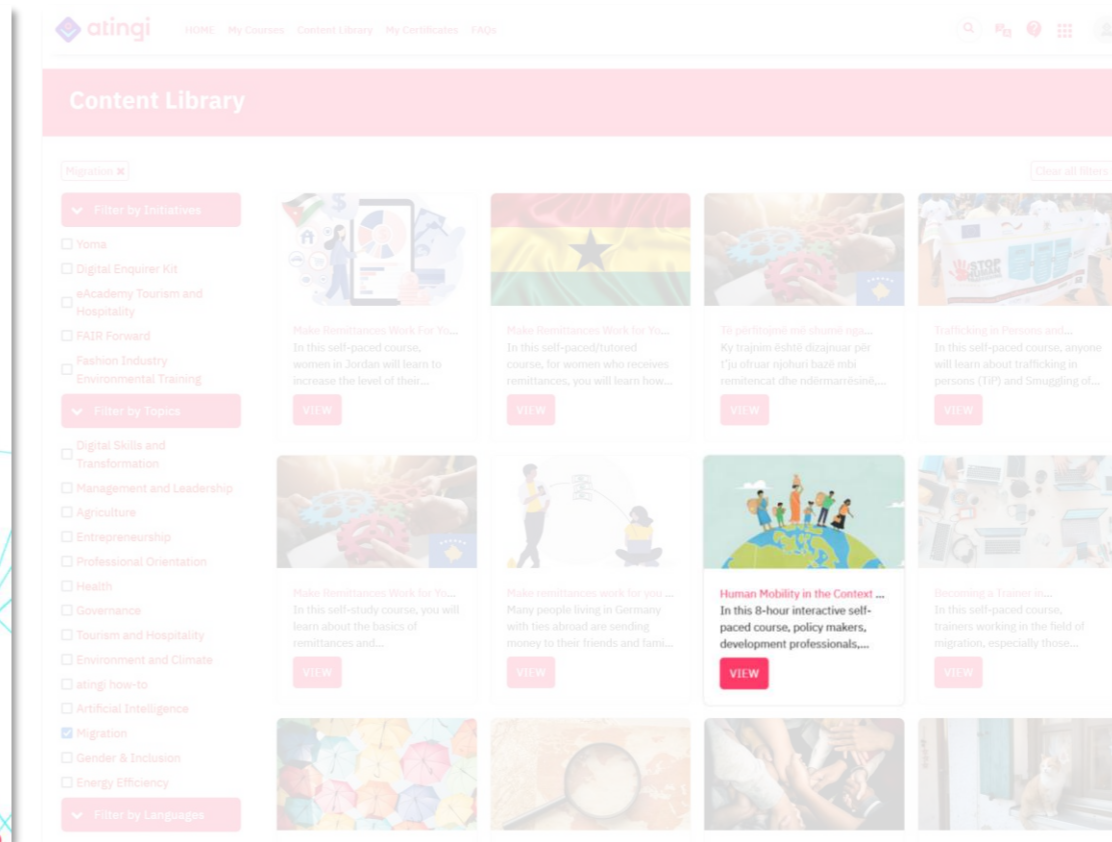


Visit *atingi*

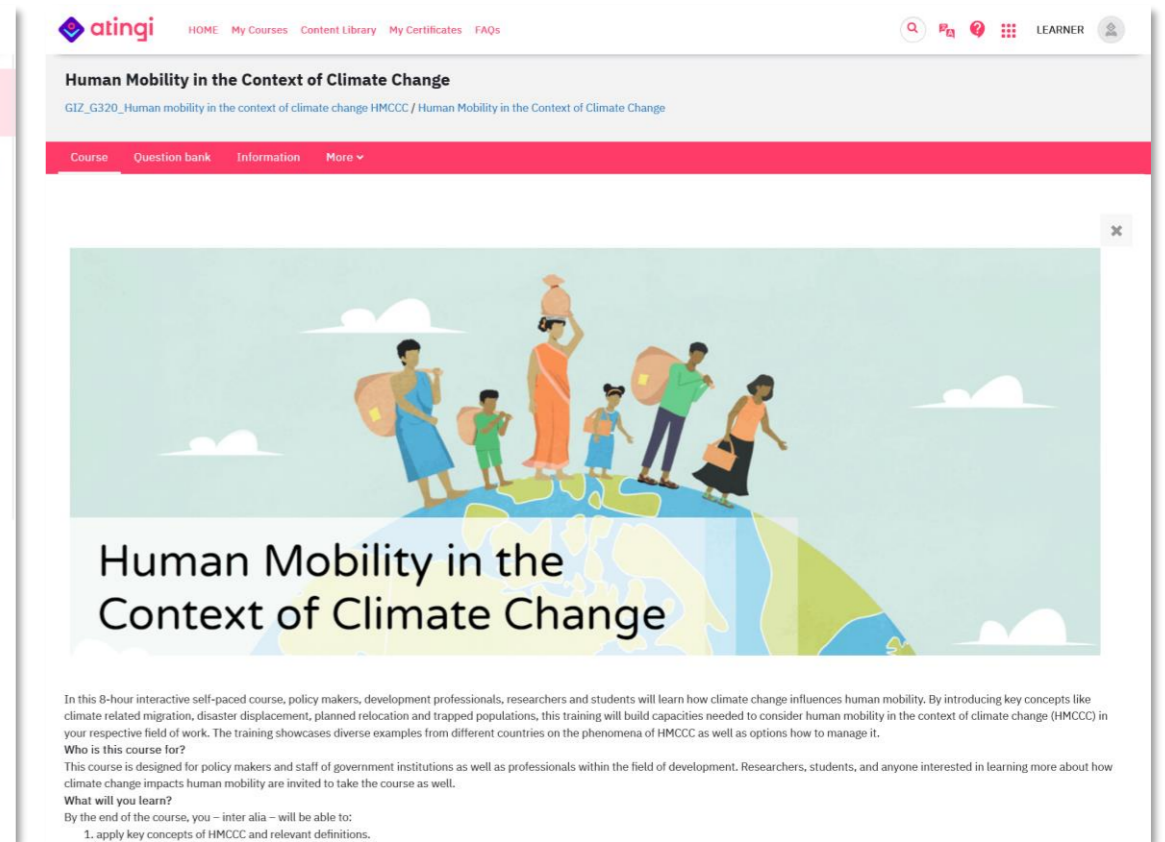
<https://online.atingi.org/>



Register for an account



Find the course in the content library



Enrol for the course

How to navigate the course

Welcome Module

Welcome

Welcome to the course on Human Mobility in the Context of Climate Change!

In this module you learn about the background of the course and get an overview of its content. You find out how to navigate and use the learning platform, the course modules, and the various types of elements and exercises that you will encounter in the course.

We wish you all the best on your learning journey and hope that this course will be useful for you!

Learning outcomes

By the end of this module, you will:

1. Know the rationale of the course
2. Know what you can expect of the course regarding content and time needed
3. Be able to **navigate** through the course and tasks
4. Know the requirements and procedures to obtain a certificate

Time requirement: ca. 10 minutes

Module 0: Welcome Done: Complete or pass the activity

Welcome to the Online Course
“Human Mobility in the Context of
Climate Change (HMCCC)”

START

Image credit: <https://pixabay.com/users/hans-2/>

Thank you!

Contact:

geest@ehs.unu.edu

HMCCC-related questions

schillinger@ehs.unu.edu

E-learning-related question

